



TOWNHOUSE

PROPERTY INVESTMENT PROPOSAL

PROJECT OVERVIEW

PROJECT TYPE	Apartments, penthouses, maisonettes and villas
LOCATION	Chloraka, Paphos <ul style="list-style-type: none">On the outskirts of Paphos Town300 metres from the seaEasy access to all amenities, facilities & servicesClose to an international private school
FACILITIES / EXTRAS	<ul style="list-style-type: none">Communal swimming pool



A MEDITERRANEAN OASIS

Explore the renowned Mediterranean-inspired lifestyle
from the comfort of your home.



CYPRUS

Explore a world of endless possibilities
on an island that serves as your gateway to Europe.

CYPRUS

- Positioned at the crossroads of three continents
- Member of the EU and Eurozone
- High level of services, including financial, medical, education, telecommunications etc.
- Ability to obtain permanent residency through purchase of real estate
- Cyprus' natural gas discovery will be a game changer for the domestic economy
- Mild climate and sunshine (340 days a year)
- Beautiful scenery and pristine beaches
- English language widely spoken
- Safe and secure environment
- High standard but low cost of living
- New marinas, golf courses and casinos



1st

Safest country in the world among small countries and 5th worldwide (2016)

4th

4th out of 144 countries on higher education and training (2016)

5th

Best relocation destination in the world (2016)

61

61 Blue Flag beaches - most per capita in the world (2020)

65

Double taxation agreements with over 65 countries worldwide (2020)

0%

Immovable, inheritance, wealth and gift tax

5%

Reduced VAT (5% from 19%) for main residence purchased

12,5%

Corporate tax, one of the lowest in Europe

PAPHOS

Cyprus' cosmopolitan resort town,
and a centre for culture.





PAPHOS

- A thriving commercial centre with international business activities
- The most luxurious hotels and resorts on the island
- Freehold properties in prime locations
- Excellent medical centres and educational institutions
- A UNESCO world heritage centre
- Modern airport linking Cyprus to international destinations
- International 18-hole championship golf courses
- Excellent tourist facilities and culinary experiences
- Modern, revived and multi-cultural centre

A TOP-RATED DESTINATION



EDUCATION



With a mix of public and private institutions, Paphos offers a range of educational opportunities from preschool to higher education.

Neapolis University Pafos, a prominent private university in Cyprus and part of the Leptos Group, is committed to providing a transformative academic journey that empowers individuals to navigate their path to success.

The city's reputation for delivering quality education is upheld by its modern facilities, dedicated educators, and a strong focus on academic excellence.

HEALTHCARE



The healthcare system in Paphos is renowned for its high standards and accessibility to both residents and visitors.

The city boasts a comprehensive healthcare infrastructure comprising public hospitals, private clinics, and pharmacies.

Key healthcare providers such as the Iasis Hospital, affiliated with the Leptos Group, along with the General Hospital, play pivotal roles in delivering essential medical services to the local community.

CULTURE



Paphos is rich in diverse cultural heritage, with iconic landmarks like the Harbour and Castle imbuing historical significance into its landscape.

The city's UNESCO World Heritage archaeological sites, including the Tombs of the Kings and intricate mosaics, vividly showcase its ancient past.

Preserving traditional architecture and customs, the Old Town offers a captivating glimpse into the region's historical legacy.



TOWNHOUSE

LEVELS	2: Lower Ground Floor, Ground Floor
FEATURES	Living Room Dining Room Kitchen White Goods Furnished Electric Appliances
BEDROOMS	2 Bedrooms
BATHROOMS	1 Bathroom + 1 Guest Toilet
PRICE	€ 246.000 (NO VAT)

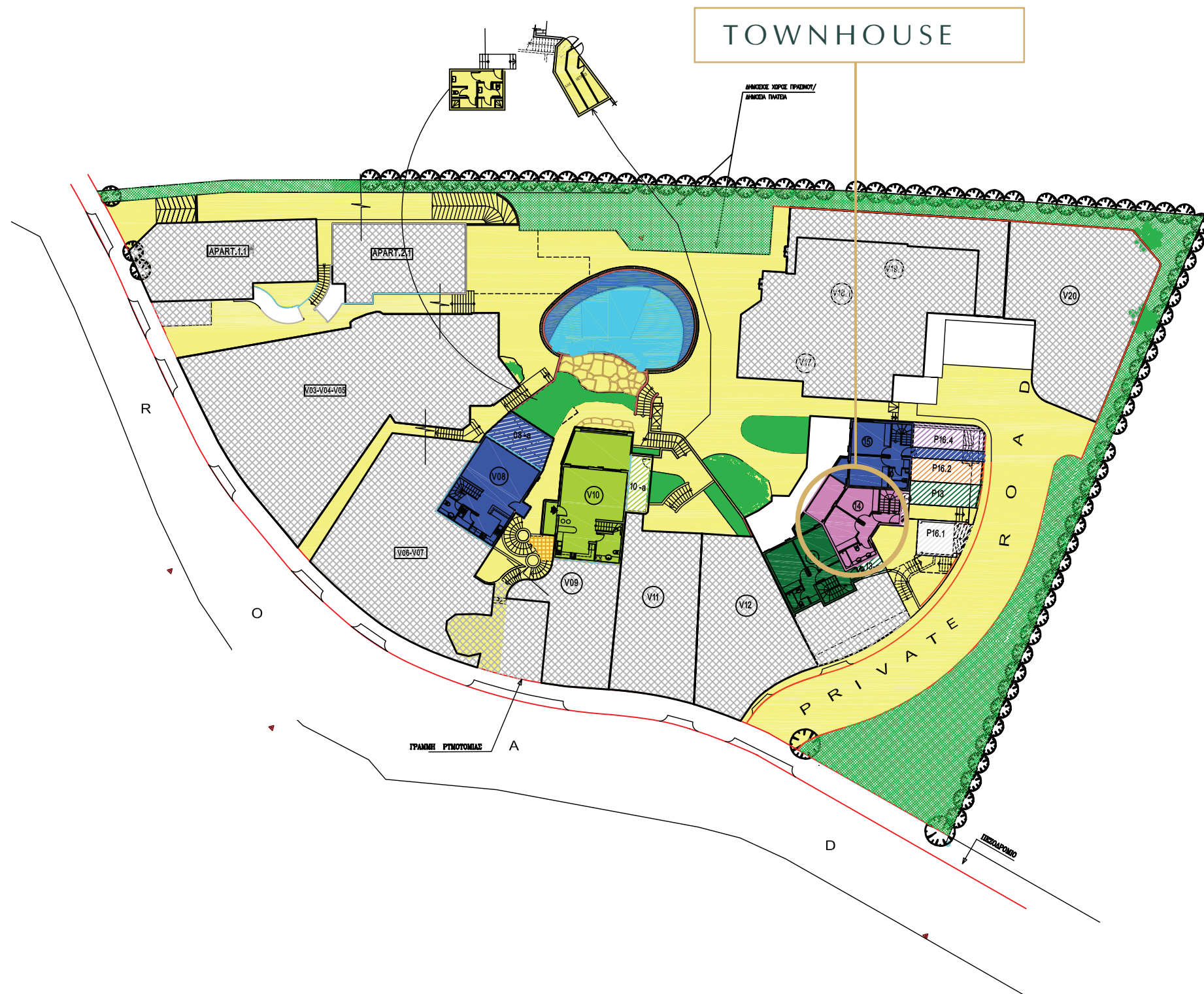




FIXTURES AND FINISHES

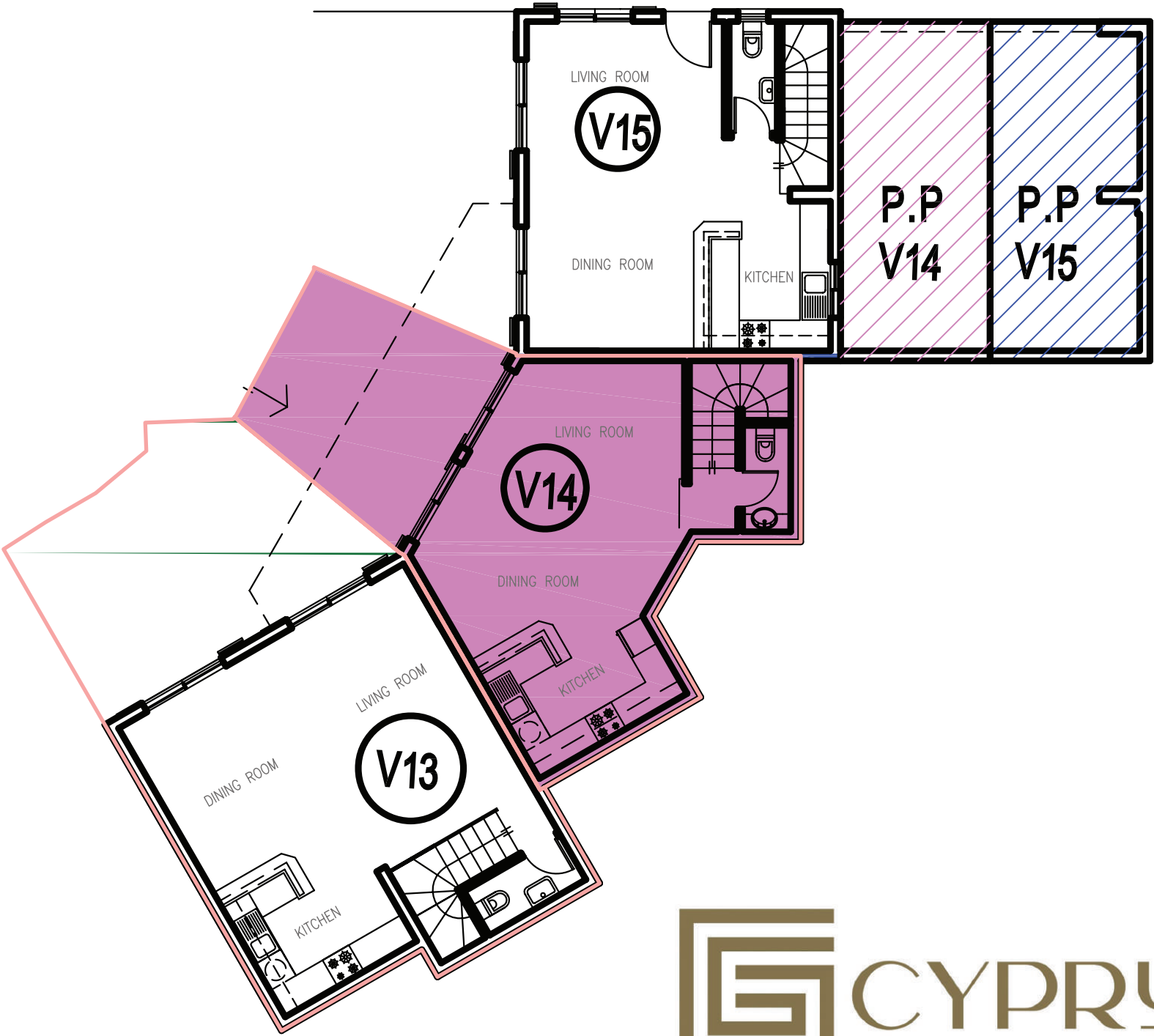
The resort has been designed with meticulous attention to detail, creating homes with style, sophistication and warmth.



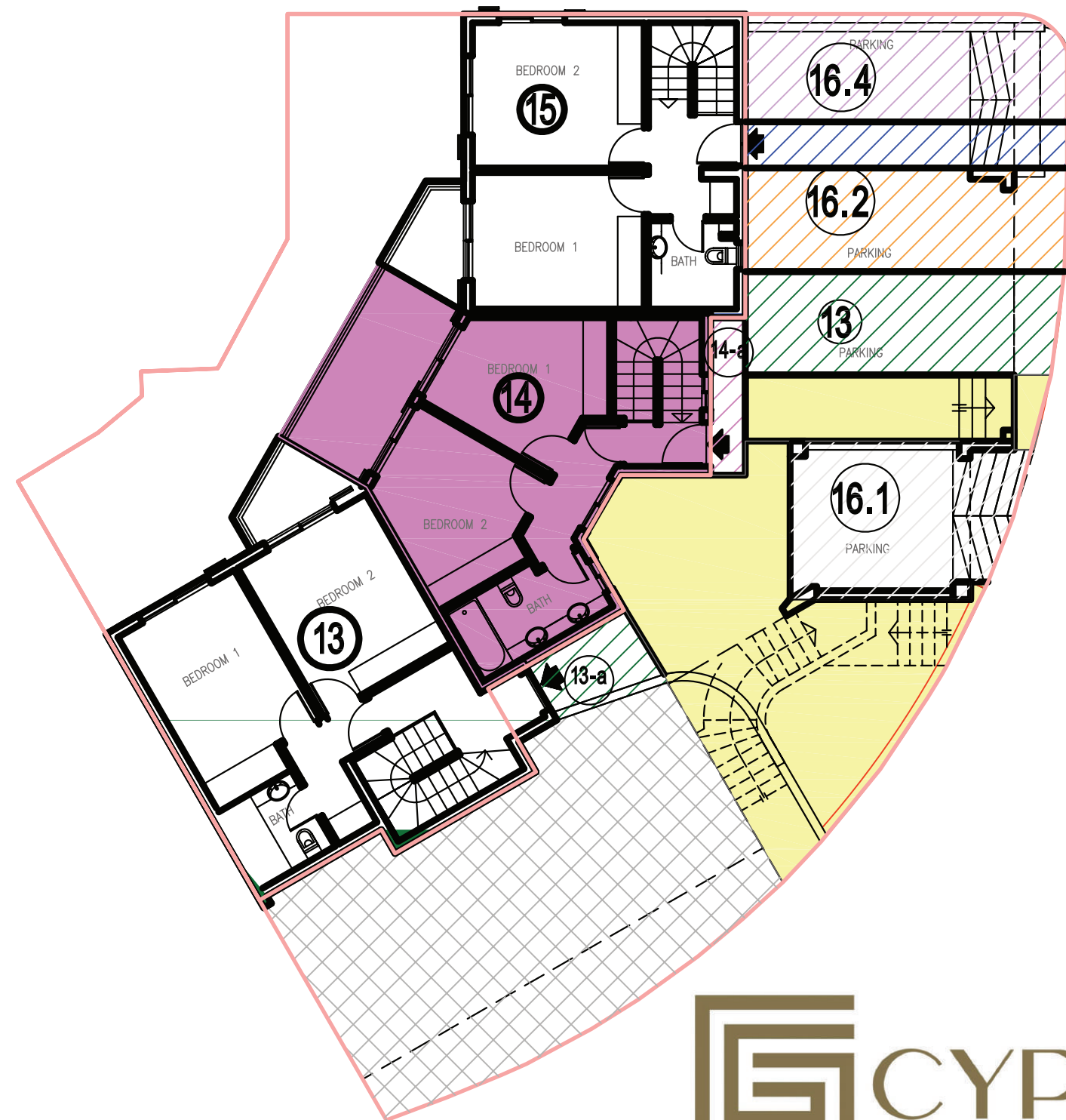


PRELIMINARY LOWER
GROUND FLOOR PLAN

COV. AREA	87.00m ²
COV. VERANDAS	9.00m ²
UNCOV. VERANDAS	16.00m ²
TOTAL COV. AREA	96.00m²



PRELIMINARY FIRST
FLOOR PLAN



VIEWS

These contemporary apartments have been designed to maximise views of the surrounding area.





www.cyprusgoldenproperties.com

The information, plans, photos and artists' impressions contained in this presentation are for guidance purposes only and do not constitute a representation or an offer to treat. The Developer reserves the right to effect changes as he may deem appropriate prior to Contract.